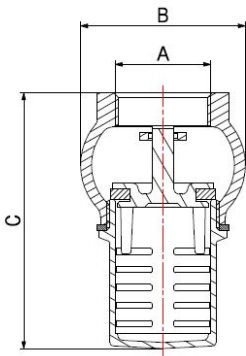
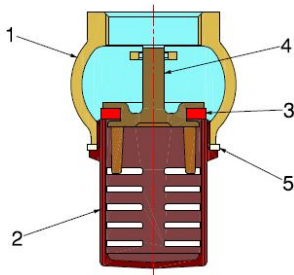


CHECK VALVES

FOOT VALVE

7050



- Foot valve
- Female thread ISO 228
- Temperature range min 0°C - max +60°C

Valve properly used in draught systems where it performs a non-return function for fluids that are generally non-corrosive, compatibly with the valve materials.

Plumbing, heating, industrial and agricultural sectors are the ideal fields of application.

The seat tightness is guaranteed by a NBR seal.

It can be only installed vertically with the strainer pointing downwards.

COMPONENTS

POS.	PART NAME	N°	MATERIAL
1	Body	1	CW617N UNI-EN 12165
2	Filter	1	Brass UNI-EN 1982-CB753S
3	Filter gasket	1	Fiber
4	Shutter	1	CW617N UNI-EN 12165
5	Seal gasket	1	NBR

DIMENSIONS

DN	A	B	C	PN
15	1/2"	39	61	10
20	3/4"	45	70	10
25	1"	51	82	10
32	1.1/4"	61	95	8
40	1.1/2"	69	103	8
50	2"	80	121	8
65	2.1/2"	100	168	6
80	3"	121	194.5	6
100	4"	145	216.5	6

PACKAGING

	1/2"	3/4"	1"	1.1/4"	1.1/2"	2"	2.1/2"	3"	4"
CODE	70500004	70500006	70500008	70500010	70500011	70500013	70500015	70500017	70500019
PCS BOX	-	-	-	-	-	-	-	-	-
PCS CARTON	150	100	60	60	50	30	25	20	9