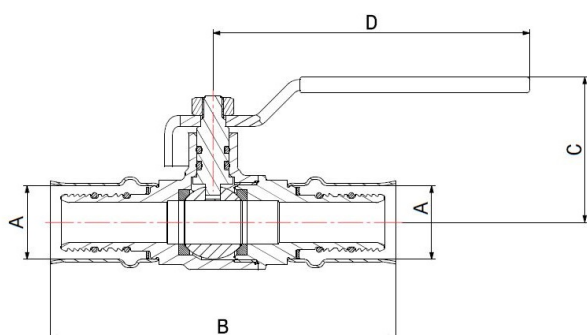
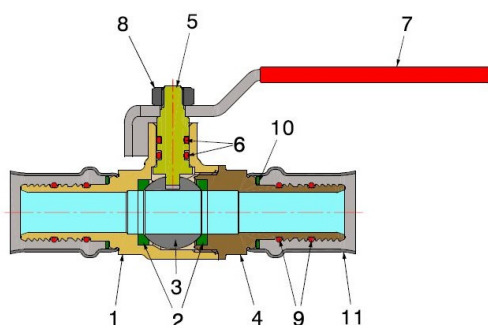
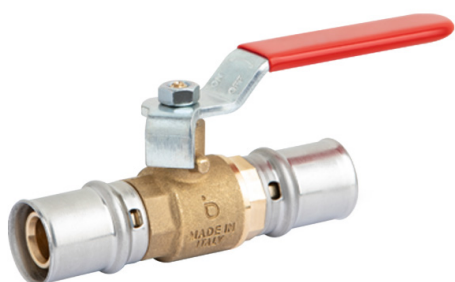


PRESS FITTINGS FOR PEX-AL-PEX PIPES

BUILT-IN BALL VALVE WITH PRESS CONNECTIONS

402101



- Built-in ball valve with iron lever and press connections
- Maximum operating pressure of 10 bar
- Temperature range between min 0°C – max +95°C
- The jaws for the fitting pressing have to be **TH** profile

Valve suitable for distributing and interrupting fluids that are generally non – corrosive and compatibly with the valve material. Heating, plumbing and industrial systems are the ideal fiels of application, such as high and low temperature heating systems, air-conditioning and distribution of drinking water. The ball seal is guaranteed by two PTFE seats. The operating mechanism seal features two O-Rings with an internally installed stem and anti-ejection system. The Pex-Al-Pex valve-pipe seal is ensured by two O-Rings in EPDM PEROX, particularly suitable for use with water and glycol solutions maximum 50%. The pressing of the stainless steel sleeve, to be carried out with electromechanical tools, guarantees a perfect and indivisible join between fitting and pipe and a good resistance to external stresses. It is advisable to carry out a complete maneuver cycle at least once every three months in order to prevent limescale deposits that could compromise the valve functioning.

COMPONENTS

POS.	PART NAME	N°	MATERIAL
1	Body	1	CW617N UNI-EN 12165
2	Seal	2	PTFE
3	Ball	1	CW617N UNI-EN 12164 chrome-plated
4	End connection	1	CW617N UNI-EN 12164
5	Stem	1	CW617N UNI-EN 12164
6	O-Ring	2	EPDM Perox
7	Lever	1	Galvanised iron and PVC coated
8	Nut	1	Galvanised iron
9	O-Ring	4	EPDM Perox
10	Washer	2	PTFE
11	Bushing	2	AISI 304 stainless steel

DIMENSIONS

A	B	C	D	PN
16	96	40	87	10
20	96	40	87	10
26	96	42	87	10
32	100	45	87	10

PACKAGING

	16	20	26	32
CODE	40210116R	40210120R	40210126R	40210132R
PCS BOX	10	10	10	8
PCS CARTON	100	100	100	80