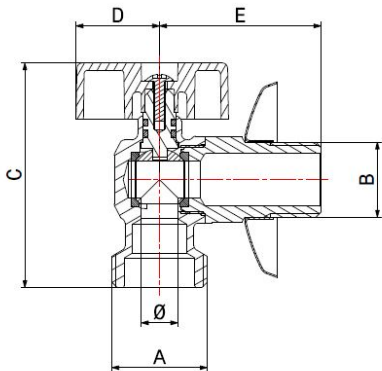
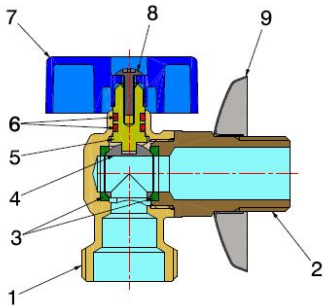


WASHING MACHINE TAPS

WASHING MACHINE BALL VALVE WITH ROSETTE

7836



- Washing machine ball valve with rosette
- Male thread ISO 228
- Temperature range min 0°C max +80°C

Bibcock suitable for distributing and interrupting fluids that are generally non-corrosive, compatibly with the valve materials. Plumbing and heating systems are the ideal field of application, where it is used as shut-off bibcock before other appliances such as washing machines or dishwashers.

It's a reduced bore valve and the ball seal is guaranteed by two PTFE seats.

The operating mechanism seal features two EPDM Perox O-Rings with an internally installed stem and anti-ejection system.

It is advisable to carry out a complete maneuver cycle at least once every three months in order to prevent limescale deposits that could compromise the valve functioning.

COMPONENTS

POS.	PART NAME	N°	MATERIAL
1	Body	1	CW617N UNI-EN 12165 chrome-plated
2	End connection	1	CW617N UNI-EN 12164 chrome-plated
3	Seal	2	PTFE
4	Ball	1	CW617N UNI-EN 12164 chrome-plated
5	Stem	1	CW617N UNI-EN 12164
6	O-Ring	2	EPDM Perox
7	Handle	1	ABS chrome-plated
8	Screw	1	Stainless steel
9	Rosette	1	Stainless steel

DIMENSIONS

A	B	C	D	E	Ø	PN
3/4"	1/2"	62	23	45	10	10

PACKAGING

	3/4"
CODE	78360006
PCS BOX	1
PCS CARTON	100