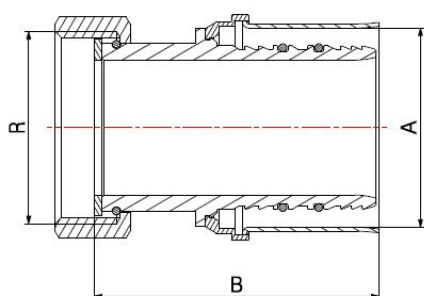
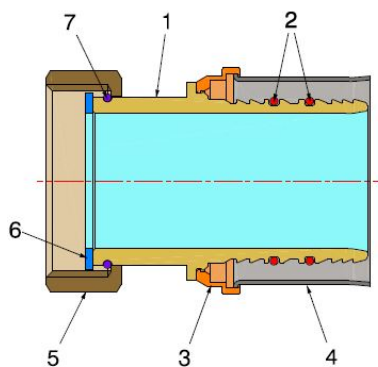
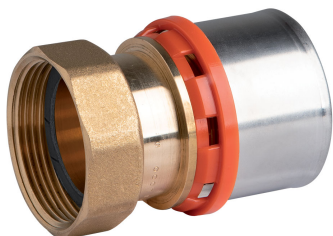


PRESS FITTINGS FOR PEX-AL-PEX PIPES

STRAIGHT FITTING WITH SWIVEL NUT

4006



- Straight press fitting with swivel nut
- Maximum operating pressure 10 bar
- Thread ISO 228
- Temperature range min 0°C - max +95°C
- The jaws for the fittings pressing have to be **TH** profile.

Fitting suitable for distributing fluids that are generally non-corrosive, compatibly with the fitting materials. Heating, plumbing and industrial systems are the ideal fields of application, such as high and low temperature heating systems, air-conditioning and distribution of drinking water. The tightness is guaranteed by two EPDM PEROX O-Rings, particularly recommended with water-glycol solutions, with a maximum glycol presence of 50%. The steel sleeve pressing, carried out with electromechanical tools, ensures a perfect and indivisible crimping to the pipe as well as an excellent resistance to external stress.

ACS

COMPONENTS

| POS. | PART NAME | N° | MATERIAL |
|------|----------------|----|--|
| 1 | Fitting | 1 | CW617N UNI-EN 12164 |
| 2 | O-Ring | 2 | EPDM Perox |
| 3 | Bushing holder | 1 | Plastic |
| 4 | Bushing | 1 | AISI 304 stainless steel |
| 5 | Nut | 1 | CW617N UNI-EN 12165 (hot pressed) - CW617N UNI-EN 12164 (from bar) |
| 6 | Gasket | 1 | Fasit Omnia |
| 7 | Snap ring | 1 | Stainless steel |

* Measurements without snap ring component

DIMENSIONS

| A | R | B |
|-----|--------|-----|
| 40* | 1.1/4" | 65 |
| 50 | 1.1/2" | 77 |
| 63 | 2" | 79 |
| 75 | 2.1/2" | 118 |

PACKAGING

| | 40 - 1.1/4" | 50 - 1.1/2" | 63 - 2" | 75 - 2.1/2" |
|------------|-------------|-------------|----------|-------------|
| CODE | 40064010 | 40065011 | 40066313 | 40067515 |
| PCS BAG | 2 | 2 | 2 | 2 |
| PCS CARTON | 30 | 20 | 14 | 14 |