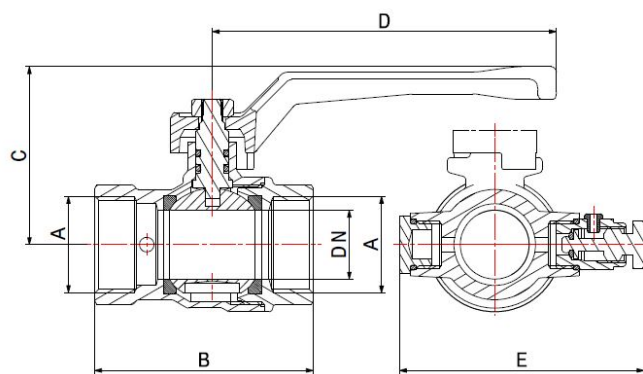
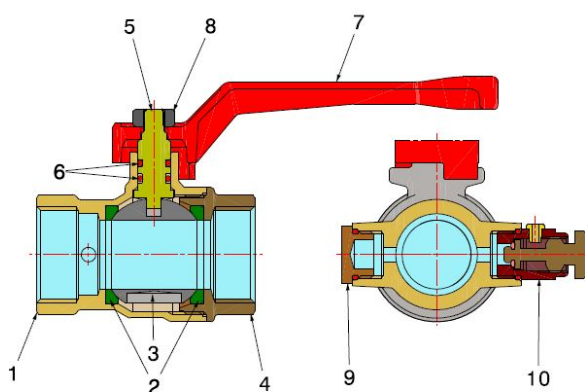


WATER BALL VALVES

TAMIGI

761502



- F/F ball valve with drain cock and aluminium lever
- Thread ISO 228
- Temperature range min -10°C - max +95°C

Valve suitable for distributing and interrupting liquids that are generally non-corrosive, compatibly with the valve materials. Plumbing, heating, industrial and agricultural sectors are the ideal fields of application. It's a full bore valve and the ball seal is guaranteed by two PTFE seats.

The operating mechanism seal features two O-Rings with an internally installed stem and anti-ejection system.

It is advisable to carry out a complete maneuver cycle at least once every three months in order to prevent limescale deposits that could compromise the valve functioning.

COMPONENTS

POS.	PART NAME	N°	MATERIAL
1	Body	1	CW617N UNI-EN 12165 nickel-plated
2	Seal	2	PTFE
3	Ball	1	CW617N UNI-EN 12165 chrome-plated
4	End connection	1	CW617N UNI-EN 12165 nickel-plated
5	Stem	1	CW617N UNI-EN 12164
6	O-Ring	2	NBR
7	Lever	1	Lacquered aluminium
8	Nut	1	Galvanised iron
9	Cap with O-Ring	1	See code 33001102XA
10	Drain valve	1	See code 39911102

DIMENSIONS

DN	A	B	C	D	E	PN	KV*
15	1/2"	54	51	95	63	15	10,05
20	3/4"	61	54	95	70	15	24,56
25	1"	70	63	120	76	15	51,21
32	1.1/4"	82	76	120	85	15	68,65
40	1.1/2"	93	88	150	94	15	98,83
50	2"	108	97	150	103	15	177,04

PRESSURE DROP see chart at the end of catalogue

PACKAGING

	1/2"	3/4"	1"	1.1/4"	1.1/2"	2"
CODE	76150204R	76150206R	76150208R	76150210R	76150211R	76150213R
PCS BOX	10	10	8	-	-	-
PCS CARTON	120	120	80	25	18	18