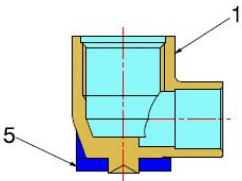


COPPER PIPE FITTING

FITTING WITH FIXED
BRACKET WITH SHAPED
COPPER PIPE

9676

- Welding Female/TuCu fitting with shaped fixed bracket
- Thread ISO 228
- Maximum operating pressure 10 bar

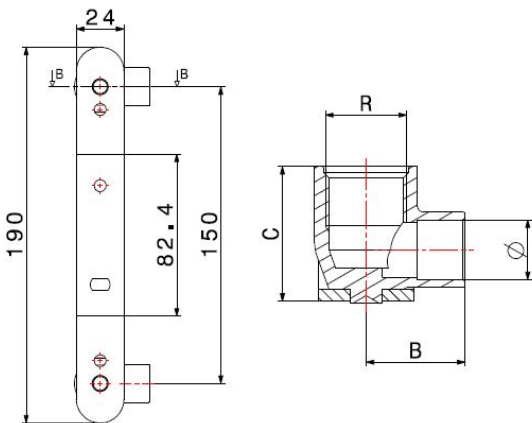


COMPONENTS

POS.	PART NAME	N°	MATERIAL
1	Fitting	2	CW617N UNI-EN 12165
2	Spacer pipe clip	1	Galvanised iron

DIMENSIONS

R	Ø	B	C
1/2"	15	25	34



PACKAGING

	15 - 1/2"
CODE	96761504
PCS BOX	6
PCS CARTON	60