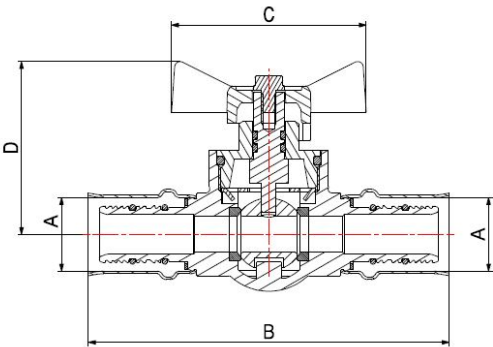
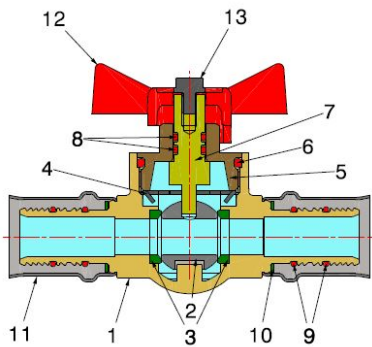
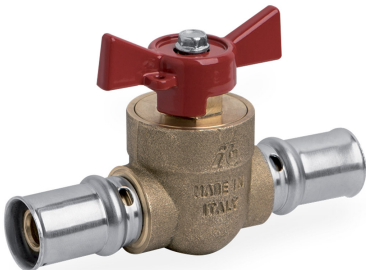


PRESS FITTINGS FOR PEX-AL-PEX PIPES

BALL VALVE WITH TEE
HANDLE

4806



- Removable ball valve with T handle and press connections for multi-layer pipe.
- Maximum operating pressure of 10 bar
- Temperature range between min 0°C - max +95°C
- Removable ball and screw
- The jaws for the fitting pressing have to be **TH** profile.

Valve suitable for distributing and interrupting fluids that are generally non-corrosive, compatibly with the valve materials. Plumbing and heating systems are the ideal fields of application, where it is used as a shut-off valve. The ball seal is guaranteed by two PTFE seats, both removable, as the ball itself, to carry out potential maintenance operations. The operating mechanism seal features two EPDM PEROX O-Rings. It is advisable to carry out a complete maneuver cycle at least once every three months in order to prevent limescale deposits that could compromise the valve functioning.

COMPONENTS

| POS. | PART NAME | N° | MATERIAL |
|------|-------------------|----|-----------------------------------|
| 1 | Body | 1 | CW617N UNI-EN 12165 |
| 2 | Ball | 1 | CW617N UNI-EN 12164 chrome-plated |
| 3 | Seal | 2 | PTFE |
| 4 | Manouvre retainer | 1 | Stainless steel |
| 5 | Upper part | 1 | CW617N UNI-EN 12164 |
| 6 | O-Ring upper part | 1 | EPDM Perox |
| 7 | Stem | 1 | CW617N UNI-EN 12164 |
| 8 | O-Ring stem | 2 | EPDM Perox |
| 9 | O-Ring fitting | 4 | EPDM Perox |
| 10 | Washer | 2 | PTFE |
| 11 | Bushing | 2 | AISI 304 stainless steel |
| 12 | Handle | 1 | Lacquered aluminium |
| 13 | Screw | 1 | Galvanised iron |

DIMENSIONS

| A | B | C | D | PN |
|----|-----|----|----|----|
| 16 | 100 | 54 | 48 | 10 |
| 20 | 100 | 54 | 48 | 10 |
| 26 | 100 | 54 | 50 | 10 |

PACKAGING

| | | | |
|------------|-----------|-----------|-----------|
| | 16 | 20 | 26 |
| CADE | 48061616R | 48062020R | 48062626R |
| PCS BAG | 10 | 10 | 8 |
| PCS CARTON | 60 | 60 | 48 |