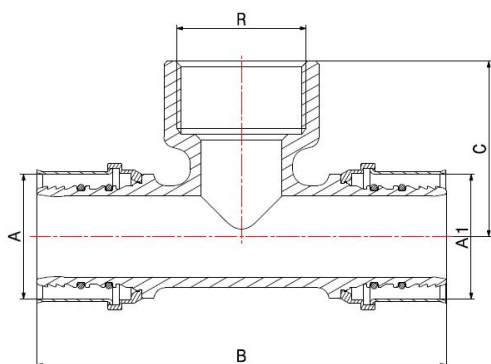
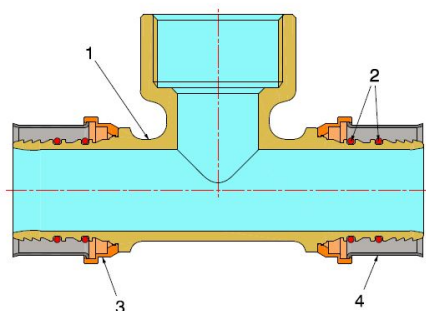


PRESS FITTINGS FOR PEX-AL-PEX PIPES

FEMALE TEE FITTING

4032



- Female tee press fitting
- Maximum operating pressure 10 bar
- Thread EN 10226-1
- Temperature range min 0°C – max +95°C
- The jaws for the fittings pressing have to be **TH** profile.

Fitting suitable for distributing fluids that are generally non-corrosive, compatibly with the fitting materials. Heating, plumbing and industrial systems are the ideal fields of application, such as high and low temperature heating systems, air-conditioning and distribution of drinking water.

The tightness is guaranteed by two EPDM PEROX O-Rings, particularly recommended with water-glycol solutions, with a maximum glycol presence of 50%.

The steel sleeve pressing, carried out with electromechanical tools, ensures a perfect and indivisible crimping to the pipe as well as an excellent resistance to external stress.

ACS

COMPONENTS

POS.	PART NAME	N°	MATERIAL
1	Fitting	1	CW617N UNI-EN 12165
2	O-Ring	4	EPDM Perox
3	Bushing holder	2	Plastic
4	Bushing	2	AISI 304 stainless steel

DIMENSIONS

A	R	A1	B	C
40	3/4"	40	132	37
40	1.1/4"	40	132	57
50	3/4"	50	150	37
50	1.1/2"	50	164	64
63	3/4"	63	150	42
63	1"	63	174	45
63	2"	63	174	73

DIMENSIONS - ARTICLES ON DEMAND

A	R	A1	B	C
40	1"	40	132	57
50	1"	50	164	41
75	1.1/4"	75	206	55

PACKAGING

	40 - 3/4" - 40	40 - 1" - 40	40 - 1.1/4" - 40	50 - 3/4" - 50	50 - 1" - 50	50 - 1.1/2" - 50	63 - 3/4" - 63	63 - 1" - 63	63 - 2" - 63	75 - 1.1/4" - 75
CODE	4032405640	4032400840	4032401040	4032505650	4032500850	4032501150	4032635663	4032630863	4032631363	4032751075
PCS BAG	2	2	2	2	2	2	2	2	2	1
PCS CARTON	14	14	14	12	12	12	8	8	8	6