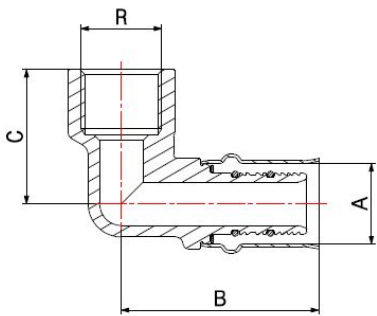
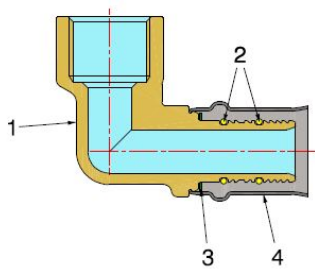


HOMEGAS PRESS FITTINGS FOR PEX-AL-PEX PIPES

FEMALE ELBOW FITTING

4452



- Female elbow press fitting for gas
- Maximum operating pressure MOP 0,5 BAR
- Thread UNI EN 10226-1
- Temperature range min -20°C - max +70°C
- Manufactured according to UNI/TS11344
- The jaws to be used for the pressing are **TH** profile.

The fitting is particularly suitable for the distribution of natural gas and G PL at low pressure.

The fields of application can be the installation of new plants or replacing existing ones. Sealing is ensured by two O-Rings in NBR with yellow teflon, approved according to UNI EN 682/06 and DVGW EN 549.

The pressing of the steel sleeve ensures a perfect and indivisible grafting to the pipe and a good resistance to external stresses.



COMPONENTS

POS.	PART NAME	N°	MATERIAL
1	Fitting	1	CW617N UNI-EN 12165
2	O-Ring	2	NBR UNI-EN 682/06 - DVGW EN 549
3	Washer	1	PTFE
4	Bushing	1	AISI 304 stainless steel "gas marked"

DIMENSIONS

A	R	B	C
16	1/2"	49	34
20	1/2"	50	34
20	3/4"	50	35
26	3/4"	52	40

PACKAGING

	16 - 1/2"	20 - 1/2"	20 - 3/4"	26 - 3/4"
CODE	44521654	44522054	44522056	44522656
PCS BAG	10	10	10	5
PCS CARTON	150	120	100	80