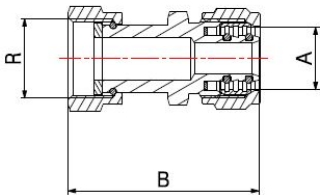
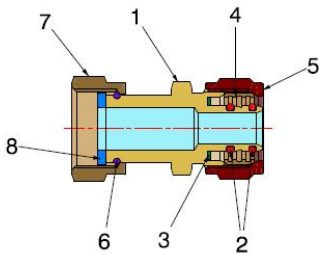


COMPRESSION FITTINGS FOR PEX-AL-PEX
PIPES

STRAIGHT COMPRESSION
FITTING WITH SWIVEL NUT

3906



- Straight compression fitting with swivel nut
- Thread ISO 228
- Maximum operating pressure 10 bar
- Temperature range min 0°C - max +95°C

Fitting suitable for distributing fluids that are generally non-corrosive, compatibly with the fitting materials. Heating, plumbing and industrial systems are the ideal fields of application, such as high and low temperature heating systems, HVAC, air-conditioning and distribution of drinking water. The fitting features an external clamping nut to ensure a perfect crimping to the pipe and an excellent resistance to external stress.

COMPONENTS

POS.	PART NAME	N°	MATERIAL
1	Fitting	1	CW617N UNI-EN 12165 nickel-plated
2	O-Ring	2	EPDM Perox
3	Washer	1	PTFE
4	Ogive	1	CW617N UNI-EN 12164
5	Nut	1	CW617N UNI-EN 12165 nickel-plated
6	Elastic ring	1	Stainless steel
7	Nut	1	CW617N UNI-EN 12164 nickel-plated
8	Gasket	1	Fasit Omnia

DIMENSIONS

A	R	B
16x2	1/2"	50

PACKAGING

	16 - 1/2"
CODE	39061604
PCS BAG	20
PCS CARTON	200