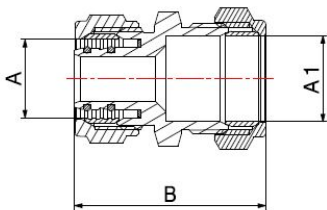
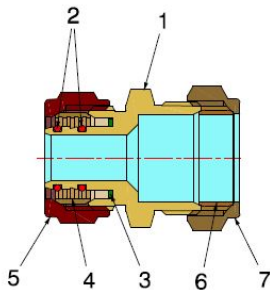


COMPRESSION FITTINGS FOR PEX-AL-PEX  
PIPES

STRAIGHT TRANSITION  
FITTING

3907



- Intermediate straight compression fitting with compression end
- Maximum operating pressure 10 bar
- Temperature range min 0°C - max +95°C

Fitting suitable for distributing fluids that are generally non-corrosive, compatibly with the fitting materials.  
Heating, plumbing and industrial systems are the ideal fields of application, such as high and low temperature heating systems, HVAC, air-conditioning and distribution of drinking water.  
The fitting features an external clamping nut to ensure a perfect crimping to the pipe and an excellent resistance to external stress.

COMPONENTS

POS.	PART NAME	N°	MATERIAL
1	Fitting	1	CW617N UNI-EN 12165 (hot pressed) nickel-plated - CW617N UNI-EN 12164 (from bar) nickel-plated
2	O-Ring	2	EPDM Perox
3	Washer	1	PTFE
4	Ogive	1	CW617N UNI-EN 12164
5	Nut	1	CW617N UNI-EN 12165 nickel-plated
6	Ogive	1	CW508L
7	Nut	1	CW617N UNI-EN 12165 nickel-plated

DIMENSIONS

A (Pex-Al-Pex)	A1 (Tu-Cu)	B
16x2	16	36
20x2	22	41
26x3	22	50

PACKAGING

	16 - 15	20 - 22	26 - 22
CODE	39071666	39072069	39072669
PCS BAG	10	10	5
PCS CARTON	200	100	50