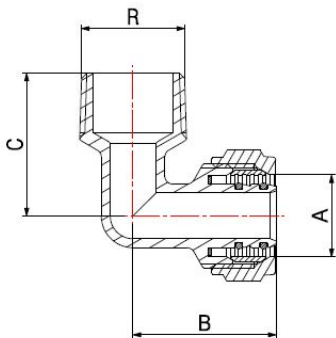
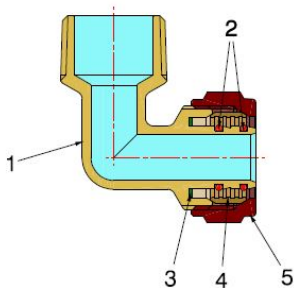


COMPRESSION FITTINGS FOR PEX-AL-PEX
PIPES

MALE ELBOW FITTING

3953



- Male elbow compression fitting
- Thread EN 10226-1
- Maximum operating pressure 10 bar
- Temperature range min 0°C - max +95°C

Fitting suitable for distributing fluids that are generally non-corrosive, compatibly with the fitting materials.
Heating, plumbing and industrial systems are the ideal fields of application, such as high and low temperature heating systems, HVAC, air-conditioning and distribution of drinking water.
The fitting features an external clamping nut to ensure a perfect crimping to the pipe and an excellent resistance to external stress.

COMPONENTS			
POS.	PART NAME	N°	MATERIAL
1	Fitting	1	CW617N UNI-EN 12165 nickel-plated
2	O-Ring	2	EPDM Perox
3	Washer	1	PTFE
4	Ogive	1	CW617N UNI-EN 12164
5	Nut	1	CW617N UNI-EN 12165 nickel-plated

DIMENSIONS			
A	R	B	C
16x2	1/2"	31	30
16x2	3/4"	33	33
18x2	1/2"	38	39
18x2	3/4"	39	35
20x2	1/2"	36	33
20x2	3/4"	36	36
26x3	3/4"	41	39
26x3	1"	41	41
32x3	1"	55	45,5

PACKAGING

	16 - 1/2"	16 - 3/4"	18 - 1/2"	18 - 3/4"	20 - 1/2"	20 - 3/4"	26 - 3/4"	26 - 1"	32 - 1"
CODE	39531604	39531606	39531804	39531806	39532004	39532006	39532606	39532608	39533208
PCS BAG	10	10	10	10	10	10	5	5	2
PCS CARTON	200	120	140	120	140	120	80	70	30