

COMPRESSION FITTINGS FOR PEX-AL-PEX PIPES

CAP FITTING

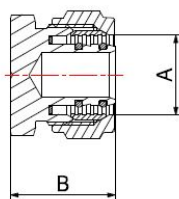
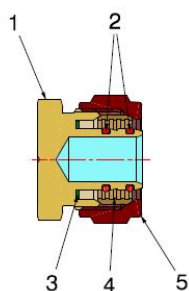
3909



- Cap compression fitting for 16x2 pipe installation test
- Maximum operating pressure 10 bar
- Temperature range min 0°C - max +95°C

Fitting suitable for distributing fluids that are generally non-corrosive, compatibly with the fitting materials. Heating, plumbing and industrial systems are the ideal fields of application, such as high and low temperature heating systems, HVAC, air-conditioning and distribution of drinking water.

The fitting features an external clamping nut to ensure a perfect crimping to the pipe and an excellent resistance to external stress.



COMPONENTS

POS.	PART NAME	N°	MATERIAL
1	Fitting	1	CW617N UNI-EN 12164 nickel-plated
2	O-Ring	2	EPDM Perox
3	Washer	1	PTFE
4	Ogive	1	CW617N UNI-EN 12164
5	Nut	1	CW617N UNI-EN 12165 nickel-plated

DIMENSIONS

A	B
16x2	25
20x2	27

PACKAGING

	16	20
CODE	39091600	39092000
PCS BAG	10	10
PCS CARTON	250	200