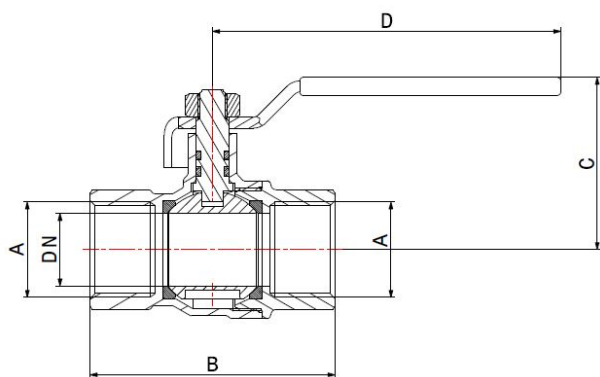
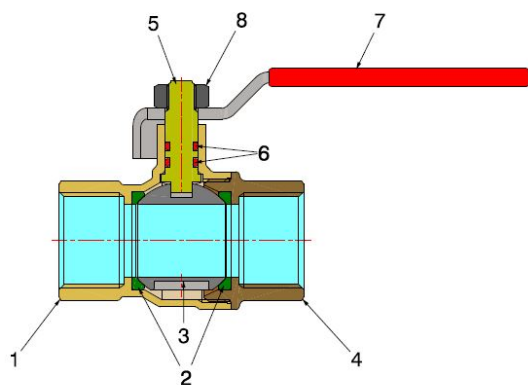
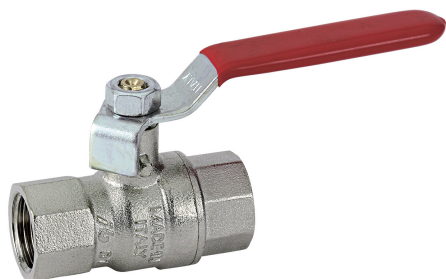


WATER BALL VALVES

MISSOURI

795101



- F/F water ball valve with iron lever
- Thread ISO 228
- Temperature range min -10°C - max +95°C

Valve suitable for distributing and interrupting liquids that are generally non-corrosive, compatibly with the valve materials. Plumbing, heating, industrial and agricultural sectors are the ideal fields of application. It's a standard bore valve and the ball seal is guaranteed by two PTFE seats.

The operating mechanism seal features two O-Rings with adjustable gland, internally installed stem and anti-ejection system.

It is advisable to carry out a complete maneuver cycle at least once every three months in order to prevent limescale deposits that could compromise the valve functioning.

COMPONENTS

| POS. | PART NAME | N° | MATERIAL |
|------|----------------|----|-----------------------------------|
| 1 | Body | 1 | CW617N UNI-EN 12165 nickel-plated |
| 2 | Seal | 2 | PTFE |
| 3 | Ball | 1 | CW617N UNI-EN 12165 chrome-plated |
| 4 | End connection | 1 | CW617N UNI-EN 12165 nickel-plated |
| 5 | Stem | 1 | CW617N UNI-EN 12164 |
| 6 | O-Ring | 2 | NBR |
| 7 | Lever | 1 | Galvanised iron and PVC coated |
| 8 | Nut | 1 | Galvanised iron |

DIMENSIONS

| DN | A | B | C | D | PN | KV* |
|----|-----------|-----|----|-----|----|--------|
| 15 | Rp 1/2" | 59 | 41 | 95 | 40 | 10,05 |
| 20 | Rp 3/4" | 68 | 46 | 95 | 40 | 21,57 |
| 25 | Rp 1" | 80 | 56 | 120 | 40 | 49,14 |
| 32 | Rp 1.1/4" | 96 | 63 | 120 | 30 | 68,65 |
| 40 | Rp 1.1/2" | 106 | 80 | 150 | 30 | 98,83 |
| 50 | Rp 2" | 130 | 88 | 150 | 30 | 177,04 |

PRESSURE DROP see chart at the end of catalogue

PACKAGING

| | Rp 1/2" | Rp 3/4" | Rp 1" | Rp 1.1/4" | Rp 1.1/2" | Rp 2" |
|-------------|-----------------|-----------------|-----------------|-----------------|-----------------|-----------------|
| CODE | 79510104 | 79510106 | 79510108 | 79510110 | 79510111 | 79510113 |
| PCS BOX | 12 | 10 | 8 | - | - | - |
| PCS CARTON | 120 | 120 | 72 | 20 | 16 | 8 |